

# Creating Value of Space

# Contents

- 03 CEO's Message
- 04 Company Overview
- 06 Plant

## Glass · Materials

- 12 Architectural Glass
- 16 Automotive Glass
- 18 PHC Pile

## Interior

- 22 HomeCC
- 26 Flooring
- 30 Film
- 32 Interior Stone

- 34 Affiliates
- 35 Business Site



Please scan the QR code to read KCC GLASS Corporation's catalog on your smartphone.

# Creating Value of Space

---

KCC GLASS Corporation was established as a spin-off from KCC Corporation in January 2020 in order to quickly respond to the changes of the B2C market environment and policies as well as to strengthen management efficiency and expertise in Glass, HomeCC, Flooring, Film and Interior Stone. Also in December of 2020, we merged with Korea Autoglass Corp., a manufacturer of automotive safety glass, etc. and secured growth engines by improving our competitive advantage and combining core competencies. At KCC GLASS Corporation, we focus our corporate competencies on adding value to our products developed based on energy efficiency and eco-friendly technology, and also on developing "ONE AND ONLY" products that will lead the global market.

In order to fulfill the management principle of "Creating value for a better life", KCC GLASS Corporation is striving to understand our customers to a greater degree by researching their lifestyles. Based on a world-leading technology, we will supply high-value glass supplies and offer our customers an ideal living space through interior design that presents state-of-the-art lifestyles.

KCC GLASS Corporation is striving to become a company that adds value to our customers' lives and builds their future through actualization of quality growth and social values. With our customer-centered management, we promise to inspire our customers and satisfy their needs. Furthermore, we hope to lead the way in fulfilling our corporate social value.

Moving forward, KCC GLASS Corporation pledges to work toward becoming a world-renowned company by offering innovative glass products and creating a living space that enhances the value of our customers' lives. I send my deepest gratitude for your constant trust and support.

CEO of KCC GLASS Corporation

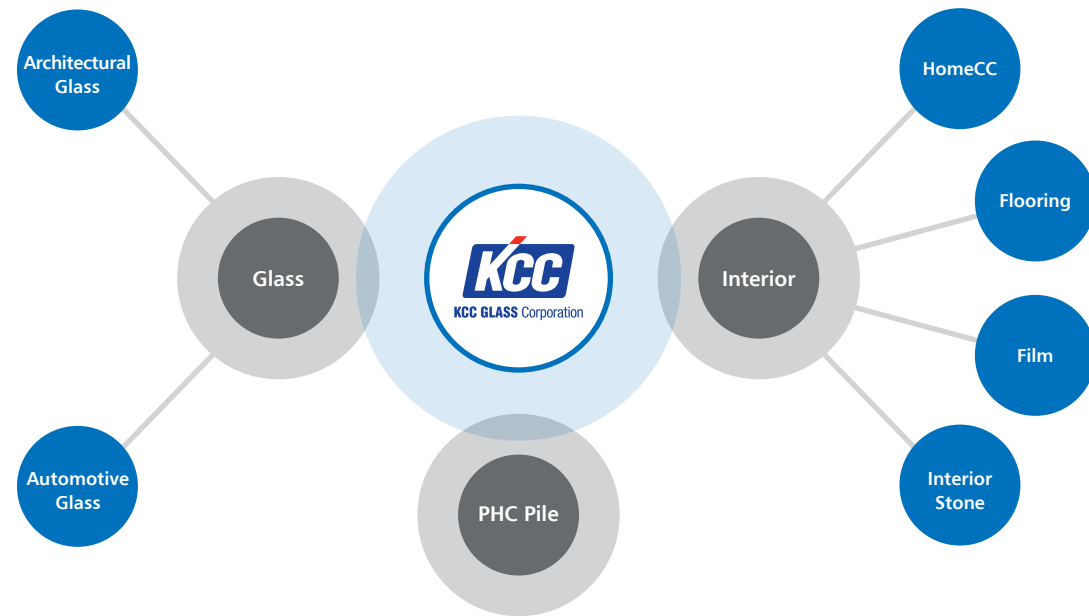


# Company Overview

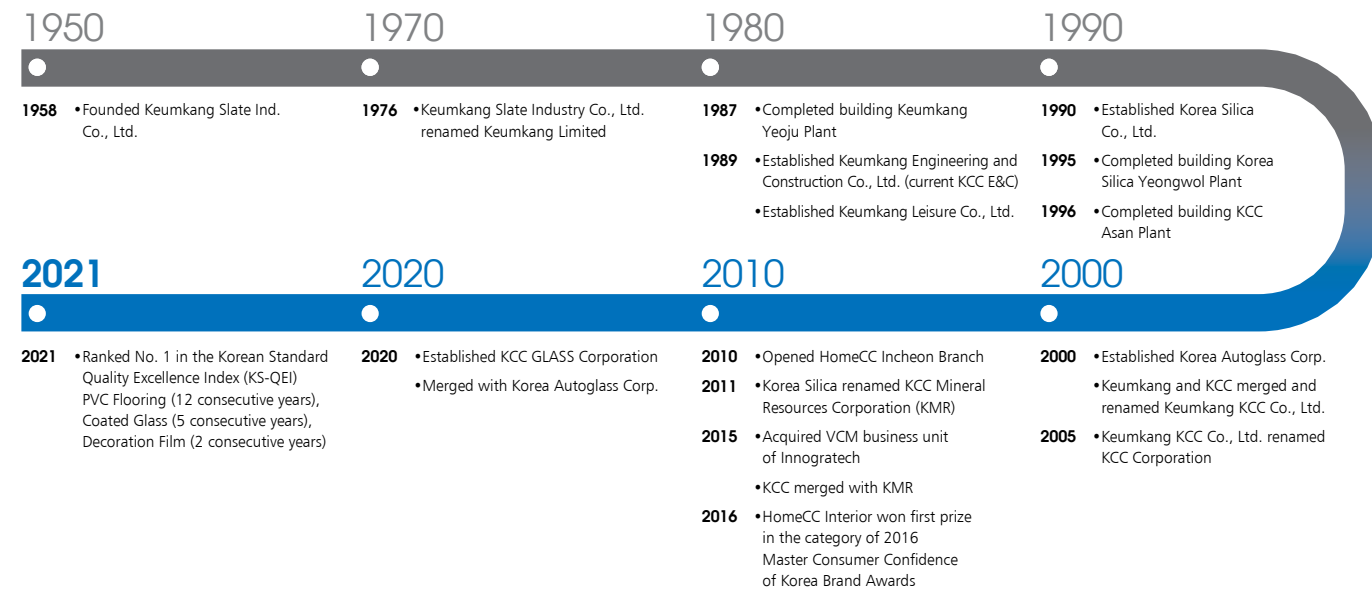
Under the management principle of "Creating value for a better life", KCC GLASS Corporation hopes to pursue management focused on value, creation, trust and environmental friendliness that satisfies our customers, shareholders, the society as well as our company members. Based on your trust, we will continue to influence and lead the global market in addition to achieving our company's vision through bold and innovative R&D.

<b>Company</b>	KCC GLASS Corporation
<b>Date of Establishment</b>	January 2nd, 2020
<b>CEO</b>	Nae-Hoan Kim
<b>Headquarters</b>	587, Gangnam-daero, Seocho-gu, Seoul, Korea
<b>Business Areas</b>	Glass, Interior Distribution/Service, Flooring, Film, Interior Stone, PHC Pile, etc.

## Business Area



## History



Headquarters of KCC GLASS Corporation





Yeosu Plant

## Plant

### Yeosu Plant

In 1987, Yeosu Plant first stepped foot into the glass industry by manufacturing safety glasses for automobiles. From the operation of line 1 for sheet glass in 1988 to the world's largest 1,200-ton operation line (line 7) in 2015, we now possess the ability to produce about 3,700 tons of sheet glass in one day with a total of 5 lines, following the operation of a double-width line (line 2) in 2018, a world-class line specific for automotive glass. In addition, we have established ourselves as the world's best glass manufacturing plant by acquiring the capability to produce approximately 17 million square meters of coated glass (which reduces building energy) each year through our two lines. As part of the low-carbon green growth, we are significantly contributing to the production of renewable energy by operating a generating equipment that uses heat waste, solar energy and Energy Storage Systems (ESS). We are leading the glass industry with excellent technology and about 100 glass-related patents.



Jeonui Plant

### Jeonui Plant

Since the establishment of the Jeonui Plant in 2000, it has been producing automotive safety glass with quality as its highest value. From 2008, we have been acquiring a 5-star grade for quality and technology, which is an assessment system employed by suppliers of Hyundai and Kia Motors. Also, for 7 consecutive years since 2015, we were awarded as the 'Supplier of the Year' at GM's Global Awards. In the recent years, we have been playing a major role in enhancing fuel economy for vehicles with the production of lightweight glass. By developing various functional glass through continuous R&D such as sound insulation glass that blocks noise and HUD glass that can project videos, we are contributing to the improvement in the passengers' convenience as well as satisfaction.



Deokso Plant

### Deokso Plant

Deokso Plant produces PHC (Pretensioned spun High strength Concrete) Pile that establish the basis of construction work and contributes to the development of South Korea's construction industry. As essential foundational material for construction with its cylindrical shape, concrete piles deliver the weight of the building onto the ground. We are securing the highest quality and supply stability based on our skillsets accumulated from producing and selling concrete piles for the past 47 years and our status with the highest production volume from a single plant in South Korea. Also, through our unparalleled production processes, various patents and technologies, we are producing and developing ultra-high-strength piles, extendable piles, HD-R piles, non-welded piles, as well as high-functional piles such as large-diameter piles.





Asan Plant

### Asan Plant

In 1995, Asan factory started a PVC flooring business, producing functional flooring such as non-slip flooring for buses, fire-resistant flooring for vessels, as well as noise-reducing flooring. The plant has become the best flooring manufacturer in Korea with the introduction of a lamination facility in 2011. In 2003, we launched the mass production of laminated films and developed a high-definition printing technology, stepping foot as a leader in the interior industry. Since 2017, we are producing VCM films with 3D patterns, which can be applied to electronics such as refrigerators, washing machines and air conditioners. Especially for bus flooring, we were awarded the Jang Yeung-sil Award in 2020 for Global Top level of functionality. For products used in flooring, we received multiple public certifications such as certifications for excellent eco-friendly building materials, the Korea Environmental Industry & Technology Initiative certification, and the Korea Certification Mark (KC Mark.) As a recognition of the products' excellent quality and eco-friendliness, it has placed 1<sup>st</sup> on the KS-QEI for the 12 consecutive years.

### Gapyeong Plant / Yeongwol Plant

The Gapyeong Plant and the Yeongwol Plant manufacture the main materials of glass, such as Silica, Dolomite and Casmite, and supply core materials such as glass, mineral wool, glass wool, cerakwool, and gypsum board to help ensure the stable quality of products and secure cost competitiveness. The two factories particularly strive to operate a nature-friendly restoration business, leading the development of eco-friendly mines. The company also puts effort into fulfilling its social responsibilities through effective communication with the local community.



Gapyeong Plant



Yeongwol Plant





# Glass · Materials

The foundation of a good space is good materials. We create glass products and materials with our customers' health and the environment in mind to offer spaces that can make our customers' lifestyles even more convenient and comfortable.





# Architectural Glass

Architectural Glass of KCC GLASS Corporation is not only applicable for interiors but also exteriors of buildings. Through our architectural glass that can be adjusted for light transmittance, it is possible to enjoy the beautiful nature more comfortably. The glass also enhances the quality of buildings with its exceptional colors.

## Flat Glass

Glass by KCC GLASS Corporation creates beautiful exteriors with its excellent transparency and subtle colors, and generates new values of space with its application to a wide variety of interior designs.

## Clear Glass

It is manufactured using the latest Float method, where liquid glass is poured on molten tin to make sheet glass. Therefore, it minimizes impurities, allowing superior smoothness and light transmittance.

### Uses

- For Residential Use** Apartments, Residential homes, etc.
- For Commercial Use** Business facilities, Studios, Knowledge Industry Centers, Accommodation facilities, etc.
- For Home Appliances** Front cover glass and partition glass

### Dimensions

3mm / 3.2mm / 4mm / 5mm / 6mm / 8mm / 10mm / 12mm



## Color Glass



As the glass can be adjusted for light transmittance, it is possible to enjoy the beautiful nature more comfortably. The glass also enhances the quality of buildings with exceptional colors.

### Uses

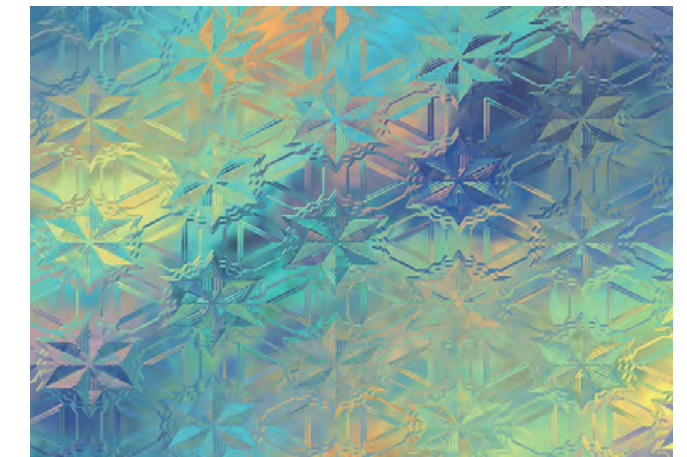
- For Residential Use** Apartments, Residential homes, etc.
- For Commercial Use** Business facilities, Studios, Knowledge Industry Centers, Accommodation facilities, etc.

### Dimensions

**Green glass** 4mm / 5mm / 6mm / 8mm / 10mm / 12mm  
**Blue glass** 5mm / 6mm

### Glass Materials

## Design Glass



Design Glass manufactured with a Roll Out procedure that creates a cozy atmosphere with its subtleness, is a semi-transparent glass with beautiful and sophisticated patterns on one side. Various patterns control direct sunlight and create a cozy atmosphere, and ensure privacy by reducing visibility from the exterior.

### Uses

Where decorative and non-transparent transmittance effects are needed, interior decoration, front doors of homes, partitions of offices and residential areas



## Coated Glass

Our Coated Glass is perfect for conserving energy with its excellent insulating effects, and offers a comfortable indoor environment all year-round with added protection from solar heat. It also completes unique exteriors of buildings with multiple color options.

### EGIS

A stronger coating compared to the conventional Soft Low-E glass makes washing and handling easier, and its resistance to moisture facilitates long-term storing. Also, during multi-level processing, it has cost-saving effects given that it doesn't have to be stripped of its metallic coating at the edges.

#### Uses

**For Residential Use** Apartments, Residential homes, etc.

**For Commercial Use** Business facilities, Studios, Knowledge Industry Centers, Accommodation facilities, etc.

#### Colors

Clear, Blue, Silver, Gray



### E-GLASS



A high-performance single Low-E glass with excellent thermal insulation and anti-condensation effects, provides a comfortable and pleasant indoor environment, and has excellent air-conditioning energy conservation effects.

#### Uses

**For Residential Use** Apartments, Residential homes, etc.

**For Commercial Use** Business facilities, Studios, Knowledge Industry Centers, Accommodation facilities, etc.

#### Colors

Clear, Blue, Silver, Gray, Bronze

### E-MAX



As a multi-functioning double Low-E glass with the highest insulation and solar heat shielding effects, it adds beauty with its unique colors and enhances the value of buildings.

#### Uses

**For Residential Use** Apartments, Residential homes, etc.

**For Commercial Use** Business facilities, Studios, Knowledge Industry Centers, Accommodation facilities, etc.

#### Colors

Clear, Blue, Silver, Gray



GT Tower  
E-MAX product coverage





# Automotive Glass

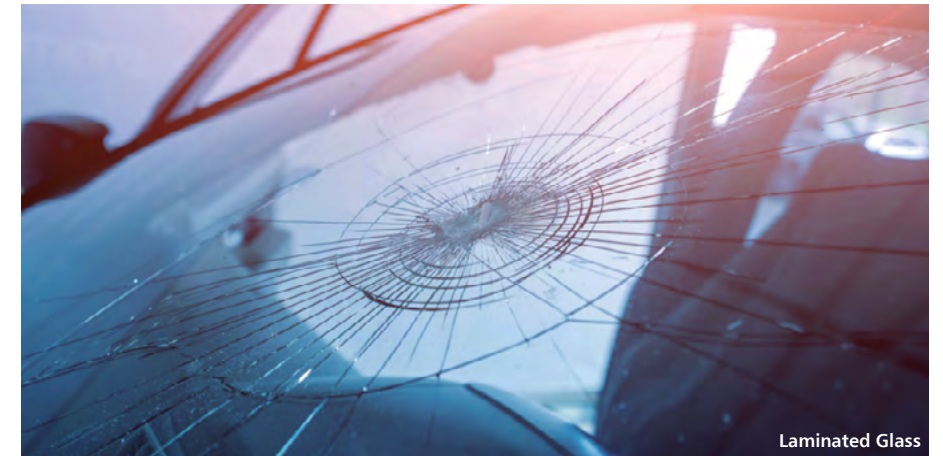
In addition to securing visibility, KCC GLASS Corporation's Automotive Glass creates a comfortable driving environment by blocking UV rays and solar heat. Through its bonding and strengthening process, it protects the passenger from external impact and reduces secondary accidents that may occur due to shattered glass.

## Automotive Safety Glass

### Standard Automotive Safety Glass

**Laminated Glass** | This is a product in which PVB (Polyvinyl-Butyral) film with superior tensile strength is inserted between two sheets of glass and bonded at high temperature and high pressure. It is mainly used for windshields of cars due to its high level of shock absorption.

**Tempered Glass** | This is a product that is heated and molded at 600 to 700°C and then cooled quickly to form strong compressive stress on the surface. It secures impact resistance three to five times stronger than standard glass and is used for the rear and side windows of cars.



Laminated Glass



Soundproof glass



Privacy Glass



HUD Glass

### Specialized Automotive Safety Glass

**Soundproof glass** | This is a product manufactured with soundproof PVB (Polyvinyl-Butyral) film with noise blocking characteristics that is inserted between two sheets of glass to reduce transmission noise in the 1,000-3,000 Hz frequency range.

**Solar Heat Shield Glass** | This is a glass with excellent UV and solar heat shielding functions, saving fuel and reducing carbon dioxide emissions by reducing the cooling load of automobiles.

**Panoramic Glass** | This is designed to make the entire roof of the car transparent, creating excellent openness and indoor ventilation.

**Privacy Glass** | This product modifies the composition of glass to darken the color of the glass so that light does not penetrate through, making the interior invisible from the outside.

**HUD Glass** | HUD (Head Up Display) Glass is a product that is made by inserting a PVB (Polyvinyl-Butyral) film and bonding it at high temperature and high pressure. It assists the driver's safe driving by displaying the vehicle's driving information on the front glass.

**Wire-heated Defrosting Glass** | Wire-heated defrosting glass generates heat with a very thin wire inserted inside the laminated glass. It removes frost, ice, and snow from the glass to support safe driving.

**Water-repellent Glass** | This is a glass coated with a special material to prevent water droplets from forming on the glass surface, and in case of rain, raindrops do not form on the glass window, providing a clear view for the driver.

**Photovoltaic Glass** | This is a glass that allows solar cells to be installed on the sunroof to generate solar power.





# PHC Pile

We are receiving high recognition from our customers by producing PHC (Pretensioned spun High strength Concrete) Pile of the highest quality based on our skillsets accumulated from years of experience. PHC Pile is an essential material for construction. It is a high-strength pile manufactured using centrifugal force and is a key material that can ensure the foundational stability of building structures.

## PHC Pile (A-Type)



It is a high-strength concrete pile produced in the pretension method with over 78.5N/mm<sup>2</sup> of compressive strength of concrete.

### Uses

Apartments, schools, factories, logistics centers

### Dimensions

**Diameter** 400/450/500/600mm

**Length** 5~15M

## PHC Pile (B-Type)



It is a concrete pile that is reinforced against bending stress and shearing force.

### Uses

Roads, railways, bridge piers, retaining walls

### Dimensions

**Diameter** 400/450/500/600mm

**Length** 5~15M

## HD-R Pile



It is a pile with added 20mm of thickness compared to the existing pile for increased support..

### Uses

Residential and commercial complexes and high-rise apartments, logistics centers

### Dimensions

**Diameter** 600mm

**Length** 5~15M

## SHS Pile



It is a high-functioning pile with increased foundational stability from axial load by 30% or more compared to existing piles.

### Uses

High-rise apartment buildings, waterfront and landfill skyscrapers

### Dimensions

**Diameter** 400/450/500/600mm

**Length** 5~15M





# Interior

Apart from an esthetically pleasing space, we offer a space where our customers would prefer living in with a long-term perspective. We design from our customers' point-of-view, hoping that the experience and joy contained in the space would directly project into our customers' lives.



# HomeCC

HomeCC, brand for interior design

HomeCC is an interior design brand that specializes in distribution and installation of various interior products and building materials produced by KCC GLASS Corporation. With accumulated technical skills in construction and interior materials and a thorough understanding of our customers, KCC GLASS Corporation's total interior design brand offers enhanced living spaces to our customers.



HomeCC has showrooms across the country, including large-scale stores. As a store specializing in interiors, customers can experience various interior products and materials that are quality assured and can make purchases after consultation all in one space.



## Stores

Stores of HomeCC are the nation's largest interior design stores with approximately 200 brands and 30,000 products. It is a comprehensive interior shopping center with interior showrooms, booths for interior materials, on top of a wide-range of amenities. At the HomeCC store, our customers can purchase reliable products from KCC GLASS Corporation and any other products related to construction and interior design. One-stop shopping is available for installation products through a installation linking service.

## Showrooms

At the HomeCC showrooms located across the country, customers can consult with experts in the area. We also offer interior package showrooms and sample exhibition areas as well as shops for interior design items. KCC GLASS Corporation's technical skills for enhanced lifestyles are offered as ideal living spaces at the HomeCC showrooms around the country.

## HomeCC Mall(homeccmall.com)

HomeCC Mall is an online channel that is directly operated by KCC GLASS Corporation. It is a total interior shopping platform with installation products such as windows and bathrooms, building materials, and a wide-range of interior supplies.

HomeCC Incheon Store







HomeCC offers a total package including consultations, free quotations, installation services, as well as after sales warranties. We provide a differentiated service where our customers can receive suggestions on design according to the space available and sign with an interior partner that is accredited by KCC GLASS Corporation.

## HomeCC Interior Service

### Design Packages

#### Suggests styles with a space design package

- Incorporation of trendy materials based on model house research
- Interior styling based on lifestyle analysis
- Formulation of design packages reflecting the latest trends

### Partners for Interior Design

#### Introduces interior partners accredited by KCC GLASS Corporation

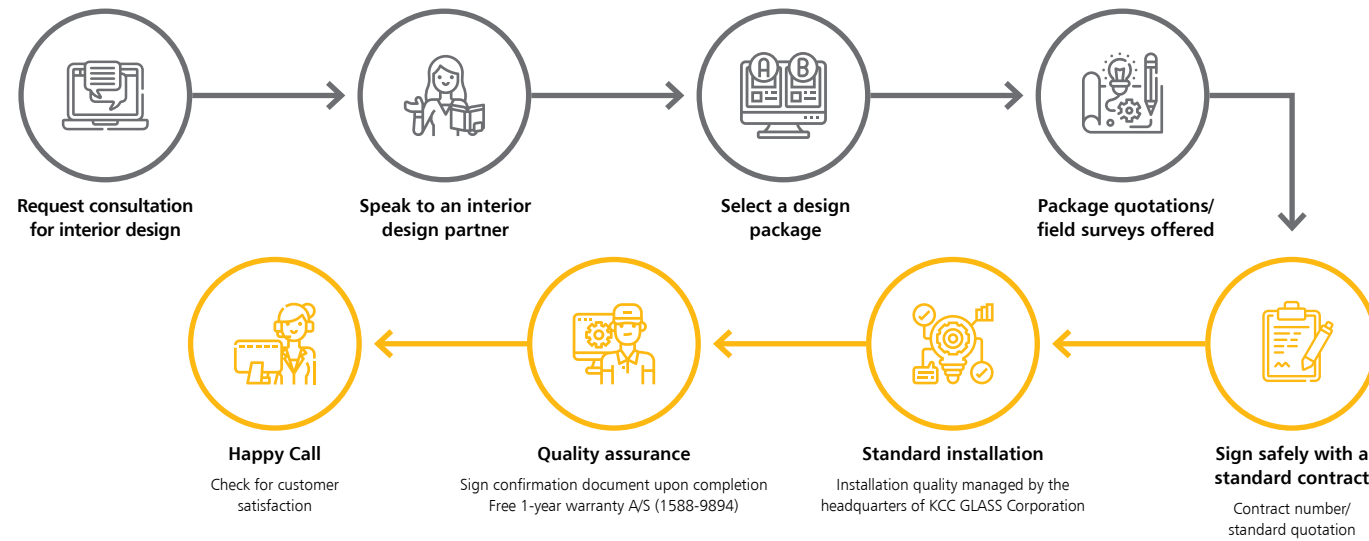
- Application of KCC GLASS Corporation-approved materials
- Management system built on regular trainings and seminars
- Usage of standard contracts assured by the headquarters of KCC GLASS Corporation

### Installation Quality Manager

#### Quality management that covers materials and Installation services

- Installation services guaranteed by safe, standard contracts
- After sales service care(free 1-year warranty)
- Confirmation after completion of installation (Happy Call service applied after confirmation of completion)

## HomeCC Interior Process



## HomeCC WINDOW

HomeCC Windows is premium windows of HomeCC, a brand specializing in interiors. HomeCC Windows boasts excellent features and various functions by using only high-quality domestic raw materials and sophisticated design. In particular, the headquarters directly manages the entire process from processing, construction, and maintenance. It also offers up to 13 years of quality assurance, which is the longest in the industry, resulting in high consumer satisfaction.

### The Industry's Longest 13-year Quality Assurance



Based on its excellent window technical skills and high quality, HomeCC Windows provides the industry's longest quality assurance of 13 years.



### EASY BATH

HomeCC Easy Bath is a cutting-edge bath construction package that uses large-size panels called 'Easy Panels' and 'Easy Floors', making it possible for quick and convenient construction. It innovatively reduces inconvenience, noise, and dust that may occur during long construction periods. By using HomeCC's unique panel construction method, the 'Hidden Molding Method', Customers can expect to create a spacious and open space and a clean bathroom without mildew.

#### Quick and easy construction directly under the headquarters in just one day

Easy Bath that can be built with residents living on site through ONE DAY construction. The headquarter's construction team from HomeCC Bathroom directly carries out the construction, managing quality control as well as after sales-service.

#### Mildew-free, spotless bathrooms with the 'Hidden Molding Method'

Unlike third-party panels and typical tile bathrooms where molding is exposed, we use large size panels with the non-molding method that can create a spacious and open space. There are also smaller gaps that prevent mildew and are easy to manage.

#### Easy cleaning with UV coating

We use UV coating on high pollution-resistant calcium boards, making it easier to manage and clean.

#### Easy Bath's safe materials

We use safe materials which are KC certified by the safety standard for children's products and meet the Radon standards established by act on protective action guidelines against radiation in the natural environment.





# Flooring

HomeCC Flooring provides value to the space by adding optimal functionality and design to the diversifying and subdivided living spaces.



## Residential Flooring

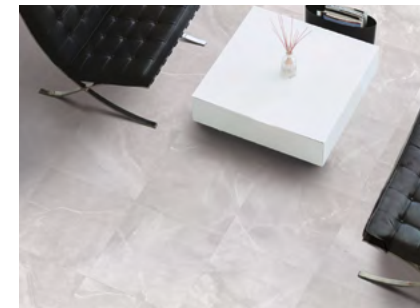
As an eco-friendly product, Residential Flooring is the most fitting choice for your family. It is not susceptible to deformations that may occur due to floor heating and has been certified for its environmental performance with the acquisition of various eco-friendly certifications such as the HB mark and the Eco-Label.

### Residential Flooring

By adding phytoncides from cypress tree oil, this flooring is eco-friendly with excellent deodorizing and antibacterial effects. This product can be used with confidence even in homes of family members with atopy dermatitis thanks to the acquisition of the Product Recommendation Mark for Atopy as a first in the flooring industry.

**Uses** Flooring for houses, apartments, dormitories, restaurants, hotels, etc.

**Major Products** SUP Green 1.8, 2.0 / SUP Auk 2.2 / SUP Dodam 2.7, 3.2 / SUP Huegaon 4.5, 5.0



### Wood Flooring

Wood flooring's natural color tones and wood textures combined with modern styles complement any type of indoor space. Its excellent durability and resistance to wear creates a comfortable and functional indoor environment that can be maintained for a long time.

**Uses** Residential facilities, hotels, small offices, restaurants, residential and semi-commercial properties

**Major Products** SUP Gangmaru Jeong / Nature / Wide





## Commercial Flooring

Commercial Flooring is highly functional and can be applied in various industries including business facilities, hospitals and schools. Thanks to its versatility, they meet the requirements for specific physical properties and maintain an elegant appearance with excellent durability.



### PVC Tiles

PVC Tiles are fully customizable to the customers' preference for design and size e.g. concrete, carpet, marble and wood. The cutting-edge manufacturing technology ensures precision and high quality for any design. Special UV paint coating allows for easy maintenance with its resistant to scratches and stains.

**Uses** Hotels, offices, restaurants, educational facilities

**Major Products** SUP Sense Tile, SUP Sense Tile Trendy



### Deluxe Tiles

Beautiful patterns and elegant colors can be maintained with a constant marble chip structure that continues from the surface to the floor. It can be applied to a wide variety of spaces at reasonable prices, and is especially suitable for locations requiring long-term durability.

**Uses** Hotels, offices, restaurants, educational facilities

**Major Products** Deluxe, Deluxe(King), Excellent



### Carpet Tiles

With convenient installation, bounce, and excellent cushioning, Carpet Tiles are a great choice for access floors, offices, hotels and financial facilities.

**Uses** Finish for raised floors, offices, hotels, and financial facilities

**Major Products** Carpet tiles



### Rubber Tiles

With superior soundproofing effect and cushioning, Rubber Tiles offer enhanced safety and can be used for offices, commercial buildings, educational, sports and public facilities, and other places where special interior designs, durability, and non-slip flooring are needed.

**Uses** Places where special interior designs and durabilities are required such as offices, commercial buildings, educational, sports and public facilities, and especially for places requiring non-slip flooring.

**Major Products** Rubber tiles

## Functional Tiles

The special formulation of Functional Tiles ensures excellent anti-static performance and electric resistance. It is a perfect choice for laboratories and computer rooms where electronic devices are widely used. For access flooring, wires and air conditioner-related equipment space is secured on the surface the flooring for better protection of wires and blocking of harmful electromagnetic waves.

**Uses** Places with a large number of electronic devices, e.g. laboratories, hospitals and computer rooms  
Places where wires and AC equipments are planted on the surface of the floor for blocking harmful electromagnetic waves

**Major Products** Functional tile>Conductive tile  
Access flooring> (KD FLOOR)  
Steel access flooring,  
Inorganic access flooring



## Flooring for Transportation Vehicles

Applied with special chip and fiberglass layers, the flooring has excellent durability and minimal deformation that may occur due to heat and moisture. Certified for various features and performances, it is perfect for special purposes (buses and ships). With the application of special color chips and various printing patterns, it can also create elegant styles.



### Automotive Flooring

Applied with partial dispersion of PVC chips and Silicone Carbide (SiC), Automotive Flooring creates an elegant style and prevents slipping. Maintenance is easy with the application of high-strength transparent layers and can be used for a long time thanks to UV coating layer of the surface.

**Uses** Buses, commercial/educational/public facilities where durability is required for an extended period of time

**Major Products** Chip type> Senstone Multi, Multiroyal  
Print type> Senstone Hybrid



### Flooring for Ships

A special glass fiber layer is applied to prevent shrinkage by heat and moisture and the lower non-woven fabric layer provides improved settling after construction. With excellent flame-resistant properties, it prevents expansion of flames in the event of a fire and has obtained various certifications.

**Uses** Ships, commercial/educational/public facilities where flame resistance and durability are required for an extended period of time

**Major Products** Print type > Senserong F DYNA





# Film

HomeCC Films are used for surface finish for furniture and molding materials. Its excellent pattern and color options complement any residential and offices space.



## VICENTI Deco(PVC/PP)

VICENTI Deco(PVC/PP) is a surface finish for interiors and exteriors of windows, furniture within the buildings and molding materials. Its excellent patterns and subtle color options create an elegant interior space.

**Uses** Doors, moldings, window arcs, etc.



## VICENTI Furniture(G-PET/PP)

VICENTI Furniture(G-PET/PP) is an eco-friendly surface finish for general and kitchen furniture, satisfying the Health-friendly Housing Construction Standards. With various colors and intricate surface texture, it provides high-quality space.

**Uses** General and kitchen furniture



## VICENTI Interior Film

Trendy designs and patterns create a sensual and beautiful space design. Rear adhesive processing makes it easy to assemble.

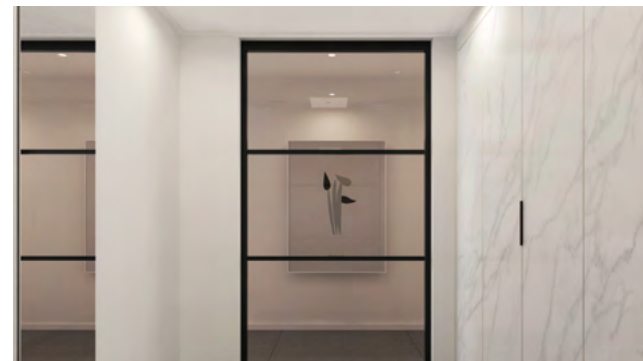
**Uses** Interior for residential and commercial spaces and furniture



## High Weatherability Sheet

As a product for the exterior, it is resistant to environmental factors such as strong wind, direct sunlight, UV rays, humidity and heavy snow. It is resistant to discoloration, deformation and abrasion and can be used to decorate exterior windows and panels.

**Uses** Exterior windows, panels, doors



## VICENTI Glass

This is an interior film for glass with improved surface hardness and printability by using the UV imprinting technology. It is used with versatility for household appliances, interior doors and doors for furniture, etc., and provides ensured safety with its UV bonding technology.

**Uses** Interior doors, doors for furniture



## Advertisement Film(Graphic Film)

Advertisement Films are for exteriors of buildings and can be applied to various spaces with excellent weatherability and clear print quality, reproducing the desired phrases and images in superior quality.

**Uses** Advertisements on exteriors of buildings and transportation vehicles etc.

## VCM(Vinyl Coated Material)

With the company's unique high luminance metal printing and UV imprinting technology, it is actualizing diverse and intricate patterns. It is enhancing the design value of premium appliances such as refrigerators and washing machines, and is meeting the customer's esthetic needs by expanding its use to building materials.

**Uses** Refrigerators, Washing machines





# Interior Stone

With its wide-range of color and material options, HomeCC Interior Stone can be applied to various spaces such as residential and commercial spaces.



## Porcelain Slabs

### SENSTONE-ULTRA

This is a ceramic surface finish with a beautiful appearance of natural stone and excellent thermal, scratch and contamination resistance. It's a supreme surface finish applicable to various areas from interiors to exteriors and walls and floorings. Unlike ordinary ceramics, it is large in size resulting in less seams when constructed, offering a clean and premium finish and creates a magnificent atmosphere.

**Uses** Kitchen countertops/backsplash, furniture tops, flooring, art walls, and exterior cladding

## Engineered Quartz

### SENSTONE-QUARTZ

As natural quartz as the main material, SENSTONE-QUARTZ is a natural quartz-based reinforced stone with natural textures and color. It is a high-quality surface material that is hygienic with low absorption rate and secures uniformity of design and color between different lots.

**Uses** Kitchen countertops/backsplash, furniture tops, flooring

## Engineered Marble

### SENSTONE-MARBLE

It is a natural marble-based reinforced stone that uses natural shattered stone for charming patterns. Compared to natural stone, its cutting process is easy and can be applied to a wide-range of areas for interior design.

**Uses** Furniture and vanity tops, Entrance steps and baseboard

## Acrylic Solid Surface

### SENSTONE-PLUS

It can be used in a wide range of applications for interior and exterior, and produces excellent designs with thermoforming and seamless finishes. Maintenance is easy due to its superior hygiene and is a material of superior practicality that can be processed with general equipment.

**Uses** Kitchen countertop, furniture and vanity tops





# Affiliates

## KCC Corporation

Established in 1958, KCC Corporation has led the national construction industry by supplying architectural and industrial materials. As the first in Korea, it has successfully commercialized the company's uniquely developed technology. It is paving the way for new materials in the chemistry sector for the 21<sup>st</sup> century, rising as global material company.



## KCC Engineering and Construction (E&C)

KCC E&C is a comprehensive construction company with international technology needed for the overall process of design, construction, supervision and trial operation in the construction sectors of civil engineering, architecture, and plants.

## KCC SILICONE Corporation

For the first time in Korea, KCC SILICONE Corporation has realized the localization of raw materials of silicone. We produce and supply a variety of silicone products including silicone rubber.

## Keumkang Leisure

Keumkang Leisure is a country club located nearest a toll gate and its wide and comfortable fairways and courses possess their own strategic elements.

# Business Site

Headquarters		587, Gangnam-daero, Seocho-gu, Seoul	+82-2-2015-8500
Plants	Yeoju Plant	541, Yeojunam-ro, Ganam-eup, Yeosu-si, Gyeonggi-do	+82-31-880-3000
	Jeonui Plant	134, Sandan-gil Jeonui-myeon Sejong Special Self-Governing City	+82-44-860-5000
	Asan Plant	658-33, Asan-ro, Yeomchi-eup, Asan-si, Chungcheongnam-do	+82-41-539-9000
	Deokso Plant	244, Sure-ro Wabu-eup Namyangju City Gyeonggi-do	+82-31-522-3000
	Gapyeong Plant	42, Muransan-gil, Gapyeong-eup, Gapyeong-gun, Gyeonggi-do	+82-31-580-1500
	Yeongwol Plant	282-54, Wondongjae-ro, Buk-myeon, Yeongwol-gun, Gangwon-do	+82-33-370-1500
Offices	Metropolitan Office	587, Gangnam-daero, Seocho-gu, Seoul	+82-1811-9375
	Chuncheong Office	150, Sintanjin-ro, Daedeok-gu, Daejeon	+82-1811-6814
	Honam Office	270, Mujin-daero, Gwangsan-gu, Gwangju	+82-1811-6308
	Yeongnam Office	1628, Jungang-daero, Geumjeong-gu, Busan	+82-1811-6837
	Incheon Office	16, Jungbong-daero 393beon-gil, Seo-gu, Incheon	+82-1811-9148
	Ulsan Office	28-17, Jinjangyutong-ro, Buk-gu, Ulsan	+82-1811-9140
HomeCC Stores	Incheon (Store)	16, Jungbong-daero 393beon-gil, Seo-gu, Incheon	+82-32-570-7000
	Ulsan (Store)	28-17, Jinjangyutong-ro, Buk-gu, Ulsan	+82-52-289-1700
	Seocho (Showroom)	344, Sapyeong-daero, Seocho-gu, Seoul	+82-2-3480-8777
	Goyang (Showroom)	2014, Goyang-daero, Deogyang-gu, Goyang-si, Gyeonggi-do	+82-2-383-2650
	Bundang Pangyo (Showroom)	210, Daewangpangyo-ro, Bundang-gu, Seongnam-si, Gyeonggi-do	+82-31-728-6840
	Daegu Junggu (Showroom)	111, Taepyeong-ro, Jung-gu, Daegu	+82-53-431-2425
	Gwangju Gwangsan (Showroom)	270, Mujin-daero, Gwangsan-gu, Gwangju	+82-62-942-7411
	Busan Geumjeong (Showroom)	1628, Jungang-daero, Geumjeong-gu, Busan	+82-51-580-5288
Branches	Northern Gyeonggi Branche	2014, Goyang-daero, Deogyang-gu, Goyang-si, Gyeonggi-do	+82-1811-9375
	Seongnam Branche	210, Daewangpangyo-ro, Bundang-gu, Seongnam-si, Gyeonggi-do	+82-1811-9375
	Suwon Branche	472, Gyeongsu-daero, Paldal-gu, Suwon-si, Gyeonggi-do	+82-1811-9375
	Wonju Branche	2461, Bugwon-ro, Wonju-si, Gangwon-do	+82-1811-9375
	Eumseong Branch	Winner's Tower #501 Daeha 1-gil 4Maengdong-myeon Eunsung-gun, Chungcheongbuk-do	+82-1811-6814
	Jeonju Branche	84, Donggok-ro, Deokjin-gu, Jeonju-si, Jeollabuk-do	+82-1811-6308
	Suncheon Branche	3, Jangseonbaegi-gil, Suncheon-si, Jeollanam-do	+82-1811-6308
	Daegu Branche	111, Taepyeong-ro, Jung-gu, Daegu	+82-1811-6837
	Pohang Branche	2F, 695, Huimang-daero, Nam-gu, Pohang-si, Gyeongsangbuk-do	+82-1811-6837
	Changwon Branche	320, Woni-daero, Uichang-gu, Changwon-si, Gyeongsangnam-do	+82-1811-6837



[www.kccglass.co.kr](http://www.kccglass.co.kr)